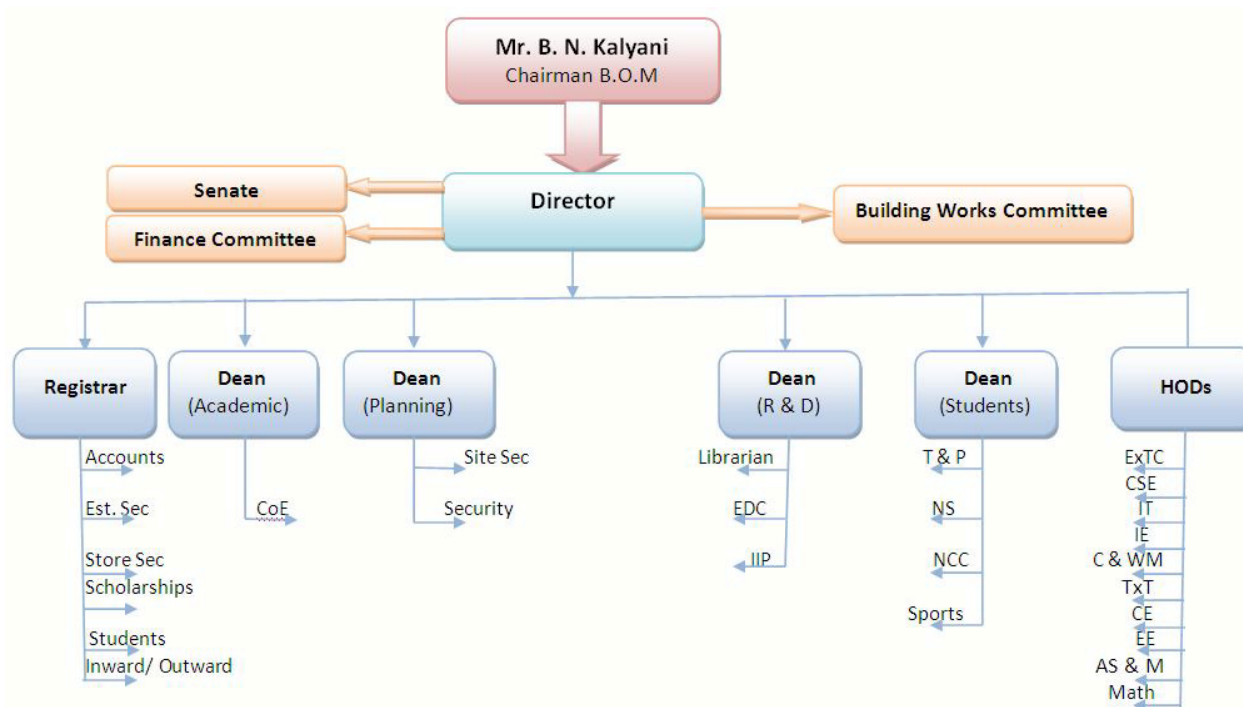


Mandatory Disclosure			
Permanent Institute ID	1-414200305		
Date & Period of Last Approval	F.No. Western/1-741090222/2012/EOA/ Date 10 th May 2012		
Name of Institute	SGGS INSTITUTE OF ENGINEERING AND TECHNOLOGY		
Address of Institute	Permanent Location as approved by AICTE		
Village	VISHNUPURI		
Taluka	NANDED		
District	NANDED		
Pin Code	431606		
State / UT	MAHARASHTRA		
Longitude & Latitude	19.11N : 77.21E		
STD Code	02462		
Fax No	02462-229236		
Office Hours at the Institution	09:30am – 05:30pm		
Academic Hours at the Institution	09:30am – 05:30pm		
Email	lmwaghmare@yahoo.com , director@sggs.ac.in		
Website	http://www.sggs.ac.in		
Nearest Rly Station(Dist in Km)	Sachkhand Hazur Sahib Nanded- 10 kms		
Nearest Airport (Dist in Km)	Nanded-15kms		
Type of Institution	Government owned Autonomous		
Category (1) of the Institute	---		
Category (2) of the Institute	---		
Name of the Organization running the Institute	SHRI GURU GOBIND SINGHJI INSTITUTE OF ENGINEERING AND TECHNOLOGY		
Type of Organization	Society		
Address of the Organization	DIRECTOR, SGGS INSTITUTE OF ENGINEERING AND TECHNOLOGY VISHNUPURI-NANDED-431606.		
Registered with Registration date	Registered dated 30/05/1983		
Website of the Organization	http://www.sggs.ac.in		
Name of Affiliated University	Swami Ramanand Teerth Marathwada University		
Address of University	DNYANTEERTH CAMPUS VISHNUPURI NANDED 431606		
Website of University	www.srtmu.org.in		
Latest Affiliation Period	Permanent affiliation		
Name of Principal/Director	Dr. L.M. Waghmare		
Exact Designation	Director		
Phone numbers with STD code	02462-229234 (o) , 02462- 269185(R)		
FAX number with STD code			
Email	lmwaghmare@yahoo.com , director@sggs.ac.in		
Highest degree	Ph.D.		
Field of Specialization	Process Control and Instrumentation Engineering		
Governing Board Members	Mr. Baba N. Kalyani, Chairman and Managing Director, Bharat Forge Ltd.	Chairman	
	Shri Ram Bhogale, Managing Director, Nirlp Appliances Ltd. Aurangabad	Member	
	Shri Kamlesh Pande,	Member	

		Vice President, Forbes Marshal Ltd. Kasarwadi Pune	
		Shri Chandrakant Ghavane, 160, "Parvati" Ganeshnagar, Nanded	Member
		Shri Sanjay Kumar, Principal Secretary, Higher and Technical Education, Govt. of Maharashtra- Mantralaya, Mumbai	Member
		Dr. Nirmal Singh Sehra, Principal, Guru Nanak Khalsa college Matunga, Mumbai	Member
		Dr. V.M. More, Director, BCUD, Swami Ramanad Teerth Marathwada University, Nanded	Member
		Dr. B.M. Dabade, Professor, SGGSI&T, Nanded	Member
		Dr. L.M. Waghmare, Director, SGGSI&T, Nanded	Director & Secretary
	Academic Advisory Body	DUGPC and DPGPC	
	Frequency of meeting & date of last meeting	Quarterly	
	Students Feedback mechanism on Institutional Governance / faculty performance	Per Semester	
	Grievance redressal mechanism for faculty, staff and students	Committees are constituted	
	Organizational Chart		



History of the Institution (including dates of introduction and number of seats of various programmes of study along with NBA accreditation, if any), in tabular form: Starting year of the programmes and intake strength (UG Programmes, B.Tech.)

Sr. No.	Programme (UG)	Starting Year	Intake strength at the time of introduction of programme	Increase in intake strength						Present Intake strength
				Year	Increase in Intake strength	Year	Increase in Intake strength	Year	Increase in Intake strength	
1.	*Electronics & Telecommunication	1981	30	1986	60	2000	90	2001	120	120
2.	Instrumentation Engineering	1981	30	2002	40	--	--	--	--	40
3.	Production Engineering	1984	30	2002	40	2009	60	--	--	60
4.	Civil - Water Management	1984	30	2002	40	--	--	--	--	40
5.	Computer Science & Engineering	1986	60	2000	90	2011	120	--	--	120
6.	Textile Technology	1987	15	2002	30	--	--	--	--	30
7.	Information Technology	2000	60	--	--	--	--	--	--	60
8.	Chemical Technology	2009	30	--	--	--	--	--	--	30
9.	Electrical Engineering	2011	30	--	--	--	--	--	--	30
Total Intake strength										530

* At the time of introduction of this course the name of the course was Electronics Engineering and later in the year 2000 changed to Electronics and Telecommunication

Starting year of the programmes and Intake strength (PG Programmes)

Sr. No.	Programme (PG)	Starting Year	Intake strength at the time of introduction of programme	Increase in intake strength		Present Intake strength
				Year	Increased Intake strength	
1.	Electronics Engineering	1987	18	--	--	18
2.	Instrumentation Engineering	1987	18	--	--	18
3.	Civil Engineering	1991	18	--	--	18
4.	Mech.CAD/CAM	1996	18	2004	25	25
5.	Product Life cycle Management	2009	18	--	--	18
6.	Computer Networks and Information Security	2011	18	--	--	18
7.	Information Technology	2011	18	--	--	18
						133

NBA Accreditation status of B.E./ B. Tech. Programmes (UG Programmes, B. Tech.)

Sr. No.	Programme (UG)	Starting Year	Accreditation Status	Period of Validity	Accreditation Status	Period of Validity
			on 06/02/2003 (First time)	w.e.f. 06/02/2003	on 19/07/2008 (Second time)	w.e.f. 19/07/08
1.	Electronics and Telecommunication	1981	Accredited	3years	Accredited	3 yrs
2.	Instrumentation Engineering	1981	Accredited	3 years	Accredited	5 yrs
3.	Production Engineering	1984	Accredited	3 years	Accredited	3 yrs
4.	Civil Water Management	1984	Accredited	5 years	Applied	---

5.	Computer Science & Engineering	1986	Accredited	3 years	Accredited	3 yrs
6.	Textile Technology	1987	Accredited	3 years	Accredited	5 years
7.	Information Technology	2000	--	--	Accredited	3 years

NBA Accreditation status of B.Tech./M.Tech. Programmes (PG Programmes, M.Tech.)

Sr. No.	Programme (PG)	Starting Year	Accreditation Status on 06/02/2003 (First time)	Period of Validity w.e.f. 06/02/2003	Accreditation Status on 19/07/2008 (Second time)	Period of Validity w.e.f. 19/07/2008
1.	Electronics Engineering	1987	--	--	Not Accredited	--
2.	Instrumentation Engineering	1989	Accredited	3 years	Accredited	3 Years
3.	Mech. CAD/CAM	1996	Accredited	3 years	Accredited	3 years
4.	Civil Engineering (Water Management)	1989	--	--	--	--
5.	Product Life cycle Management	2009	--	--	Newly started	--
6.	Computer Networks and Information Security	2011	--	--	Newly started	--
7.	Information Technology	2011	--	--	Newly started	--

Doctoral Studies	
1.	Vide letter dated 07.06.2007 from Swami Ramanand Teerth Marathwada University, Nanded; Institute is recognized as a research center by SRTMU, Nanded for doctoral program
2.	Vide letter dated 11.08.2011 from AICTE; we have received an approval for starting QIP centre at this institute. Total number of Ph.D. seats sanctioned under QIP is 10. Two seats each for disciplines: <ul style="list-style-type: none"> • Civil Engineering • Electronics and Telecommunication Engineering • Instrumentation and Control, • Mechanical Engineering • Production Engineering,

Ownership Status: Govt.(Central/State) / Trust / Society (Govt. / NGO / Private) / Private/ Other (specify)

Society (Govt. of Maharashtra)

Financial Status: Govt.(Central/State) / Grants-in-aid / Not-for-profit / Private-Self financing / Other(specify)

Grants-in-aid (100% by Govt. of Maharashtra)

Nature of Trust / Society: Government Registered Society

List other Institutions/colleges run by the Trust/Society: Not Applicable

External Sources of Funds:

Sr. No.	Name of the External Source	CFY (2011-12) (Rupees in Lakhs)	CFYm1 (2010- 11) (Rupees in Lakhs)	CFYm2 (2009-10) (Rupees in Lakhs)
1.	Salary Grant (Govt. of Maharashtra)	1606.33	926.08	657.60
2.	Construction/Equipment Grant (Govt. of Maharashtra)	400.00	550.00	305.67
3.	P.G. Scholarship Grant	91.69	87.12	0.00
4.	Research Promotional Scheme	6.25	38.25	47.75
5.	MODROB Projects	22.20	0.50	44.40
6.	BNRS Projects	0.00	5.85	0.00
7.	NRB (DRDO)	24.65	0.00	0.00
8.	C Advance	2.03	0.00	0.00
Total		2153.15	1607.8	1055.42

Internally Acquired Funds:

No.	Name of the internal Source	CFY	CFYm1	CFYm2
		2011-12 (Rupees in Lakhs)	2010-11 (Rupees in Lakhs)	2009-10 (Rupees in Lakhs)
1.	Student's fee	1206.99	768.63	926.83
2.	Consultancy Institute Share	1.81	4.07	4.45
3.	Interest on FDR	226.49	39.47	19.50
4.	Tender form sale	0.65	1.66	1.23
Total		1435.94	813.83	952.01

Scholarships or any Financial Assistance provided to Students?

Yes

if provided, basis of scholarship/assistance : Merit/Merit-cum-means/other

Sr. No.	Total Number	Number of students	CFY 2011-12 (Amount)	CFYm1 2010-11 (Amount)	CFYm2 2009-10 (Amount)
1.	SC/ST/NT/DNT/VJ/SBC/OBC/GOI	635	4506000		
		735		4657896	
		596			3377775
2.	National Merit Scholarship	02	18000		
		02		18000	
		04			36000
3.	Minority Scholarship	85	2125000		
		66		1650000	
		32			800000
4.	Physically Handicapped	2	5000		
		2		4000	
		9			18000
5.	80% marks obtained in HSC central section scholarship	160	1600000		
		137		1357000	
		82			820000
6.	ACE consultancy (Indian oil)	2	36000		
		2		36000	
		2			54000

Basis/Criterion for Admission to the Institution: All India entrance / State level entrance / University entrance / 12th level mark sheet/ other

State level entrance (MH-CET)

Total Number of Engineering Students: 2179 = Boys 1444 + Girls 735

Total Number of Engineering Students			
Sr. No.	Name of the department	No. of boys	No. of girls
1.	Electronics and Telecommunication Engg	405	201
2.	Computer Science and Engineering	318	178
3.	Instrumentation Engineering	152	46
4.	Information Technology	142	139
5.	Textile Technology	67	48
6.	Production Engineering	161	49
7.	Civil Water Management Engineering	124	43
8.	Chemical Engineering	48	26
9.	Electrical Engineering	27	05
	Total	1444	735

Total Number of Employees:

Items	CAY 2011-12		CAYm1 2010-11		CAYm2 2009-10	
	Male	Female	Male	Female	Male	Female
Total Number of Employees	268	39	252	38	241	44
Total	307		290		285	

Minimum and Maximum Number of Faculty and Staff on roll in the Engineering Institution, during the CAY and the previous CAYs (1st July to 30th June):

Items	CAY 2011-12		CAYm1 2010-11		CAYm2 2009-10	
	Min	Max	Min	Max	Min	Max
Teaching Faculty in Engineering	128	130	114	116	108	113
Teaching Faculty in Science & Humanities	10	10	09	09	09	09
Non-teaching Staff	165	167	164	165	163	163
Total	303	307	287	290	280	285